



"What I hear I forget, what I see I remember, what I do I understand."

- Xunzi (340-245 BC)

**SOARING
HIGH**



**UNLEASHING
POTENTIALS**

P.1-3 ABOUT EAGLE ADVENTURE

P.4-5 EA ACTIVITY SUMMARY

P.6-7 ADVENTURE BASED EDUCATION

P.8-9 ENVIRONMENTAL EDUCATION

P.10-11 CULTURAL EDUCATION

P.12-13 Our VENUES

P.14-16 OVERSEAS PROGRAM
OFFERING

P.17-18 SAMPLE PROGRAMS





ABOUT US

Eagle Adventure is an Experiential Education Institution based in Lantau Island, Hong Kong SAR China. We utilize experience based adventure programs to promote learning, growth, and development for the children and youth. We offer a safe environment and competent staff to encourage this growth.

We believe challenge and support going hand-in-hand with reflection will bring out the best of the learner, thereby exhibiting her/his potentials. At Eagle Adventure, various learning opportunities such as outdoor activities, adventure pursuits, environmental stewardship, service learning, cultural awareness and sensitivity, games and initiatives, and more provides the learners an avenue to personal mastery, leadership, compassion for others and the environment.

Life is an Adventure - we adhere to such thought. Eagle Adventure engages and captivates our learners to achieve more in life through seeking more of themselves, others, and the environment with the adventure essence.

OUR VALUES



Respect

The ability to show tolerance, to understand individual differences and to have empathy; the respect for oneself, others, and the environment.



Responsibility

Integral part of growing, without such growth is not possible.



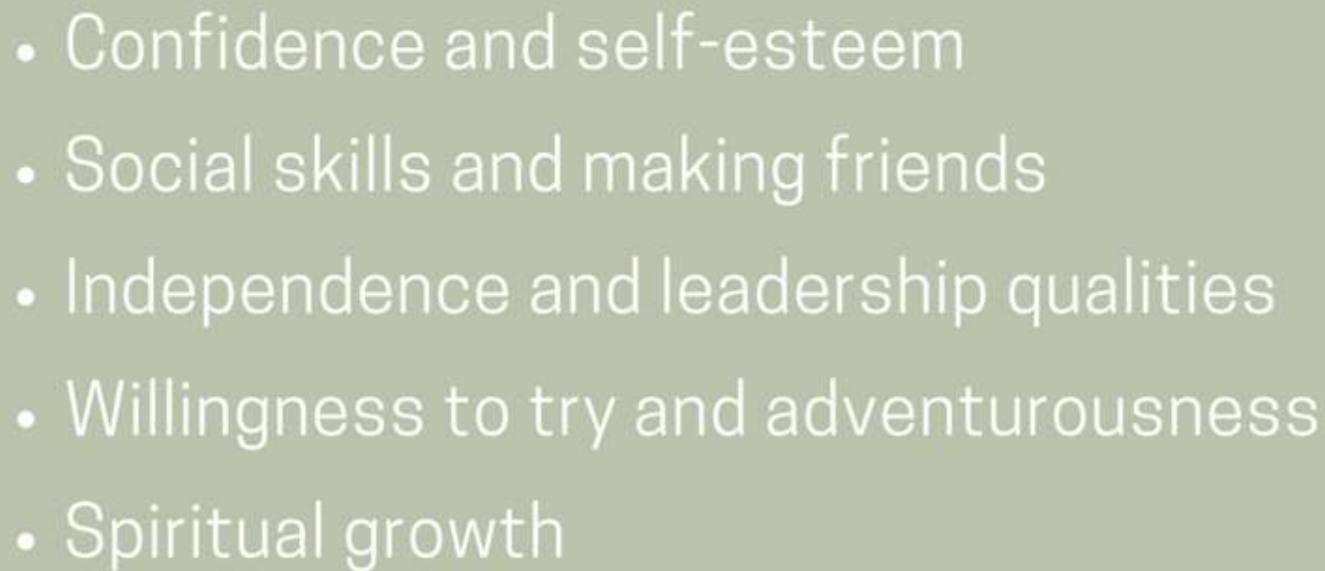
Resiliency

To build outer and inner strength, to get through and over the hardships; navigating through difficult situations and moving into positive action. environment is typically owned and managed by a hosting company.

A group of children are sitting on a green field, listening to an adult standing in front of them. The adult is wearing a black shirt and white shorts. The children are wearing various colored shirts. The background shows a green field and some trees.

OBJECTIVES

The EA Experience will be a positive force for children and youth development. It shall increase the following aspects of the learners' life

- 
- Confidence and self-esteem
 - Social skills and making friends
 - Independence and leadership qualities
 - Willingness to try and adventurousness
 - Spiritual growth

EAGLE ADVENTURES

OUTDOOR ADVENTURE SUMMARY

Kayaking

Raft Building

Dragon Boating

Gorging



Abseiling

Climbing

Biking

Backpacking



Trail Hiking



Adventure Race



Orienteering



Challenge Ropes Course



Outdoor Living Skills



EAGLE ADVENTURES

Activity Summary



ADVENTURE

BASED

EDUCATION



SERVICE LEARNING
COMMUNITY OUTREACH
PROGRAM
ADVENTURE BASED
LEARNING AND
INITIATIVES



SOLO – SILENCE AND SOLITUDE

ADVENTURE INSIDE THE
CLASSROOM

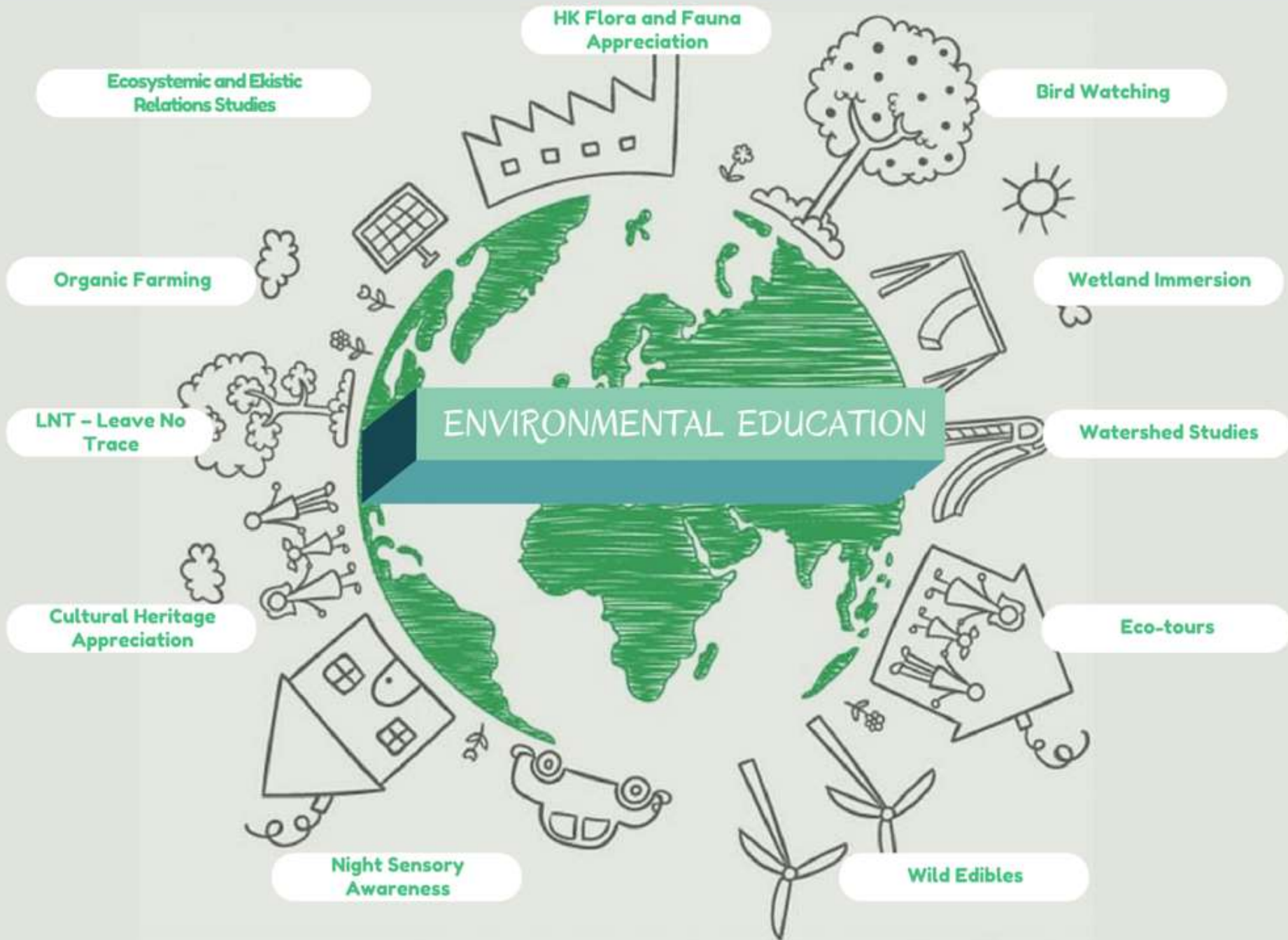
EXPEDITIONARY LEARNING

A close-up photograph of a pair of hands gently cupping a small green plant with several leaves. The plant is rooted in a mound of dark, rich soil. The hands are positioned on either side of the plant, with fingers slightly curled to support it. The background is a soft, out-of-focus brown, suggesting a natural setting. The entire image is framed by a thin, light-colored border.

ENVIRONMENTAL

EDUCATION

Study nature, Love nature, Stay close to nature. It will
never fail you - Frank Lloyd Wright





CULTURAL



EDUCATION



Tai O Fish Village Guided Tour

Fisherman Experience

Shaolin Wushu Learning

DIY Salty Egg

DIY Fish Net

DIY Salty Fish

Community Project







香港少林武術文化中心
金盾題

HONG KONG SHAOLIN WU SHU CENTER

LOCATION:

TAI O, LANTAU ISLAND HONG KONG SAR CHINA

HIGHLIGHTS:

SHAOLIN MARTIAL ARTS TRAINING, CULTURAL HERITAGE APPRECIATION, CAMPING, DRAGON BOATING, KAYAKING, BIKING, GORGING, ORIENTEERING, TRAIL HIKING, ORGANIC FARMING, ENVIRONMENTAL EDUCATION

TIDBITS:

THE COMPREHENSIVE FACILITIES AT THE CENTER INCLUDE A LARGE OUTDOOR TRAINING GROUND THAT CAN HOST OVER 100 PEOPLE IN PRACTICE AND CAN BE CONVERTED INTO A CAMPING GROUND. THERE ARE 5 SEPARATE HOSTEL ROOMS THAT CAN ACCOMMODATE A TOTAL OF 64 PEOPLE, EACH ROOM WITH PRIVATE BATHROOMS, A CANTEEN, AND AN INDOOR TRAINING HALL. THERE ARE ALSO TEN FAMILY HOSTEL ROOMS EACH EQUIPPED WITH PRIVATE BATHROOMS, AND A TEA HOUSE.

MOREOVER, THE CENTER IS BLENDED WITH THE NATURAL SCENIC BEAUTY AND HERITAGE OF THE TAI O LANDSCAPE, WHICH SERVES AS AN EXCELLENT VENUE FOR VARIOUS KINDS OF OUTDOOR, ADVENTURE, ENVIRONMENTAL AND CULTURAL ACTIVITIES. EA IS PROUD TO HAVE TAI O AS OUR BASE WHERE PEOPLE, NATURE AND CULTURE WEAVE IN.

OVERSEAS PROGRAM OFFERING:

NANTOUHSIEN
TAIWAN

SUN MOON LAKE
Training Center

日月潭特色遊學中心



YANGSHUO
GUANGXI CHINA

TERRATRIBES

Terratribes
LEADING EXPERIENTIAL EDUCATION



SUN MOON LAKE TRAINING CENTER

日月潭特色遊學中心



HIGHLIGHTS:

CULTURAL HERITAGE APPRECIATION/TEA MAKING,
CHALLENGE ROPES COURSE, SUN MOON LAKE BIKING TRAIL,
ORIENTEERING, TRAIL HIKING SUN-MOON LAKE WATER
SPORT CENTER: KAYAKING, RAFT-BUILDING

TIDBITS:

OUR LATEST ADDITION OF PARTNERS AS A GROWING
INSTITUTION IS NANTOUHSIEN, TAIWAN'S TRAINING
CENTER. IT IS NATURE AT ITS BEST WITH TAIWAN CULTURE
AND TRADITION VERY MUCH INTACT OVER THE YEARS.
EXPERIENCING NANTOUHSIEN IS A BREATH OF FRESH AIR.
ADVENTURE BASED PROGRAMMING GALORE AWAITS YOU!

Yangshuo

Guangxi China

Terratribes
LEADING EXPERIENTIAL EDUCATION

YANGSHUO, GUANGXI CHINA

HIGHLIGHTS:

**ROCK CLIMBING, CAVING, ABSEILING, KAYAKING, BIKING, CULTURAL HERITAGE
APPRECIATION**

TIDBITS:

**YANGSHOU IS FAMOUS FOR ITS LAIDBACK AND TOURIST FRIENDLY ENVIRONMENT WHERE
KARST SCENERY AND LIMESTONE IS ABUNDANT FOR ROCK CLIMBING, CAVING, ABSEILING,
AND OTHER ADVENTURE PURSUITS SUCH AS KAYAKING, AND BIKING.**



LOCATION: HONG KONG SHAOLIN WU SHU CENTER, TAI O, LANTAU ISLAND HONG KONG SAR CHINA

1DAY CAMP

AM
BUS FROM SCHOOL TO TAI O
WELCOME/INTRODUCTION/SAFETY BRIEFING
ICE BREAKERS
SHAOLIN MARTIAL ARTS TRAINING
LUNCH (VEGETARIAN OPTION)
PM
TAI O CULTURAL HERITAGE AWARENESS
ORIENTEERING
END OF THE DAY DEBRIEFING
BUS FROM TAI O BACK TO SCHOOL

2DAY CAMP

FIRST DAY:
AM
BUS FROM SCHOOL TO TAI O
WELCOME/INTRODUCTION/SAFETY BRIEFING
ICE BREAKERS
SHAOLIN MARTIAL ARTS TRAINING
LUNCH (VEGETARIAN OPTION)
PM
ADVENTURE RACE
END OF THE DAY DEBRIEFING
OVERNIGHT CAMPING/HOSTEL ROOMS

SECOND DAY:
AM
Gorging
Lunch
PM
Water Activities: Kayaking/ Dragon Boating
Bus from Tai O back to School

3DAY CAMP

FIRST DAY:
AM
BUS FROM SCHOOL TO TAI O
WELCOME/INTRODUCTION/SAFETY BRIEFING
ICE BREAKERS
SHAOLIN MARTIAL ARTS TRAINING
LUNCH (VEGETARIAN OPTION)
PM
ADVENTURE RACE
END OF THE DAY DEBRIEFING
OVERNIGHT CAMPING/HOSTEL ROOMS

SECOND DAY:
AM
Gorging
Lunch
PM
Water Activities: Kayaking/ Dragon Boating
Night Time Activities

THIRD DAY:
AM
Abseiling
Lunch
PM
Bus from Tai O Back to School



Email : info@eagleadventurehk.com

Call us : +852 2557 5681 / 9255 7029

www.eagleadventurehk.com

